



Relays, Contactors & Switches > Switches > Switch Seals & Accessories



Switch Boot Accessory Type: **Lens Sets**

Switch Boot & Accessory For Use With: **Command Series Round Button Switches or Round Pilot Lights**

Style: **Round**

Switch Boot & Accessory Color: **Green**

Features

Product Type Features

Product Type	Accessory
Illuminated	No
Switch Boot Accessory Type	Lens Sets
Style	Round

Configuration Features

Tactile	Yes
---------	-----

Body Features

Lens Color	Green
Switch Boot & Accessory Color	Green

Mechanical Attachment

Attachment Method	Snap Acting
-------------------	-------------

Housing Features

Process Sealed	No
----------------	----

Usage Conditions

Oil-Tight	Yes
-----------	-----

Operation/Application

Switch Boot & Accessory For Use With	Command Series Round Button Switches or Round Pilot Lights
--------------------------------------	--

Other

Comment

Lens sets include, button, diffuser and cap.

Product Compliance

[For compliance documentation, visit the product page on TE.com>](#)

EU RoHS Directive 2011/65/EU

Compliant

EU ELV Directive 2000/53/EC

Compliant

China RoHS 2 Directive MIIT Order No 32, 2016

No Restricted Materials Above Threshold

EU REACH Regulation (EC) No. 1907/2006

Current ECHA Candidate List: JUNE 2022 (224)

Candidate List Declared Against: JUNE 2022 (224)

Does not contain REACH SVHC

Halogen Content

Low Halogen - Br, Cl, F, I < 900 ppm per homogenous material. Also BFR/CFR/PVC Free

Solder Process Capability

Not applicable for solder process capability

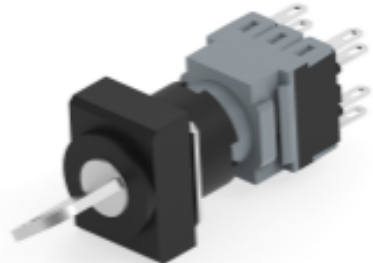
Product Compliance Disclaimer

This information is provided based on reasonable inquiry of our suppliers and represents our current actual knowledge based on the information they provided. This information is subject to change. The part numbers that TE has identified as EU RoHS compliant have a maximum concentration of 0.1% by weight in homogenous materials for lead, hexavalent chromium, mercury, PBB, PBDE, DBP, BBP, DEHP, DIBP, and 0.01% for cadmium, or qualify for an exemption to these limits as defined in the Annexes of Directive 2011/65/EU (RoHS2). Finished electrical and electronic equipment products will be CE marked as required by Directive 2011/65/EU. Components may not be CE marked. Additionally, the part numbers that TE has identified as EU ELV compliant have a maximum concentration of 0.1% by weight in homogenous materials for lead, hexavalent chromium, and mercury, and 0.01% for cadmium, or qualify for an exemption to these limits as defined in the Annexes of Directive 2000/53/EC (ELV). Regarding the REACH Regulation, the information TE provides on SVHC in articles for this part number is based on the latest European Chemicals Agency (ECHA) 'Guidance on requirements for substances in articles' posted at this URL: <https://echa.europa.eu/guidance-documents/guidance-on-reach>

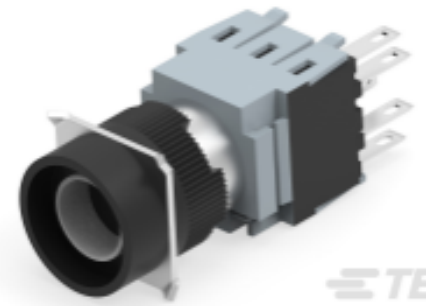
Compatible Parts



TE Part # 3-1437569-5
164TL22=RECT MOM ILLUM PB 2NO&



TE Part # 1-1437569-2
164J2A22=2-POS KEYLK MAINT KYP



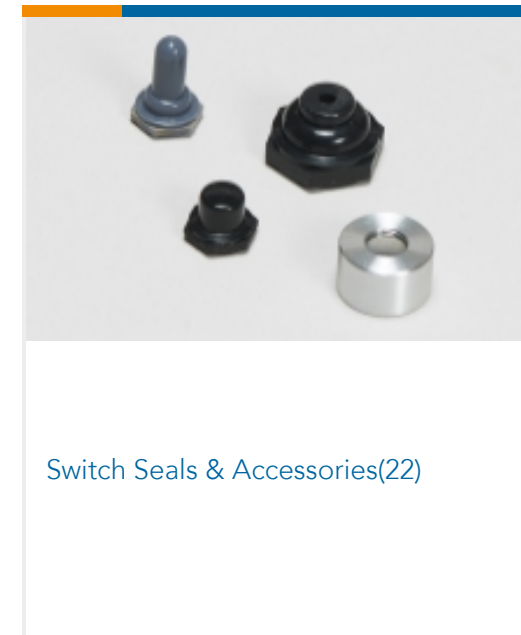
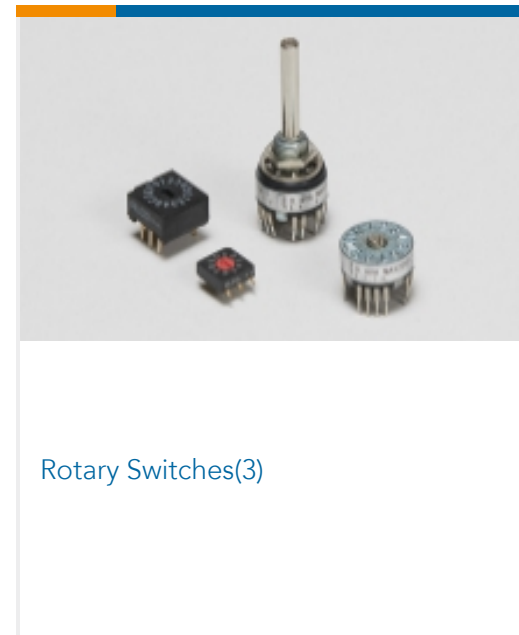
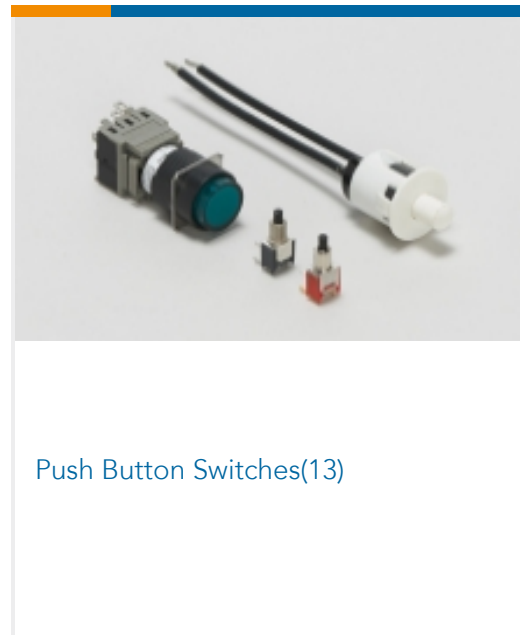
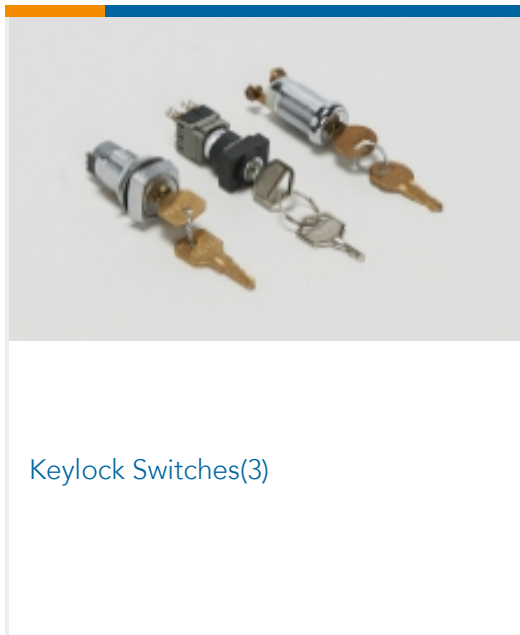
TE Part # 1437569-2
164EL11=RND MOM ILL PB 1NO&INC



TE Part # 2-1437569-5
164SL11=SQ MOM ILL PB 1NO&1NC



Also in the Series | Alcoswitch Command



Documents

Product Drawings

64E5=COLOR PB CAP GREEN ROUND

English

Datasheets & Catalog Pages

SWITCHES_CORE_PROGRAM_CATALOG

English

Product Environmental Compliance

Product Compliance

English

Product Compliance

English